



2 McConnell Close ANGLESEA VIC

3 2

Offers required by 31 October 2023

Facing north, set on a corner allotment and directly opposite the entrance to beautiful Coogoorah Park.

You will not need the car with an easy short stroll into town, the main beach and Anglesea Heath. The kids can ride their bikes to primary school and you can enjoy the mountain bike trails on your doorstep .

This wonderfully presented residence has a genuine appeal from the moment you enter. Whether it's the raking high ceilings or the warmth of the timber detailing or the natural light it captures, this property is very welcoming, easy to live in and maintain.

The split level design enjoys accommodation in 3 large bedrooms, serviced by 2 bathrooms including an ensuite of the main bedroom. Each of these rooms are oversized and

Type : House
Price : \$ 1,395,000
Land Size : 592 sqm
View : <https://www.greatoceanproperties.com.au/7524236>



Marty Maher
0352200000

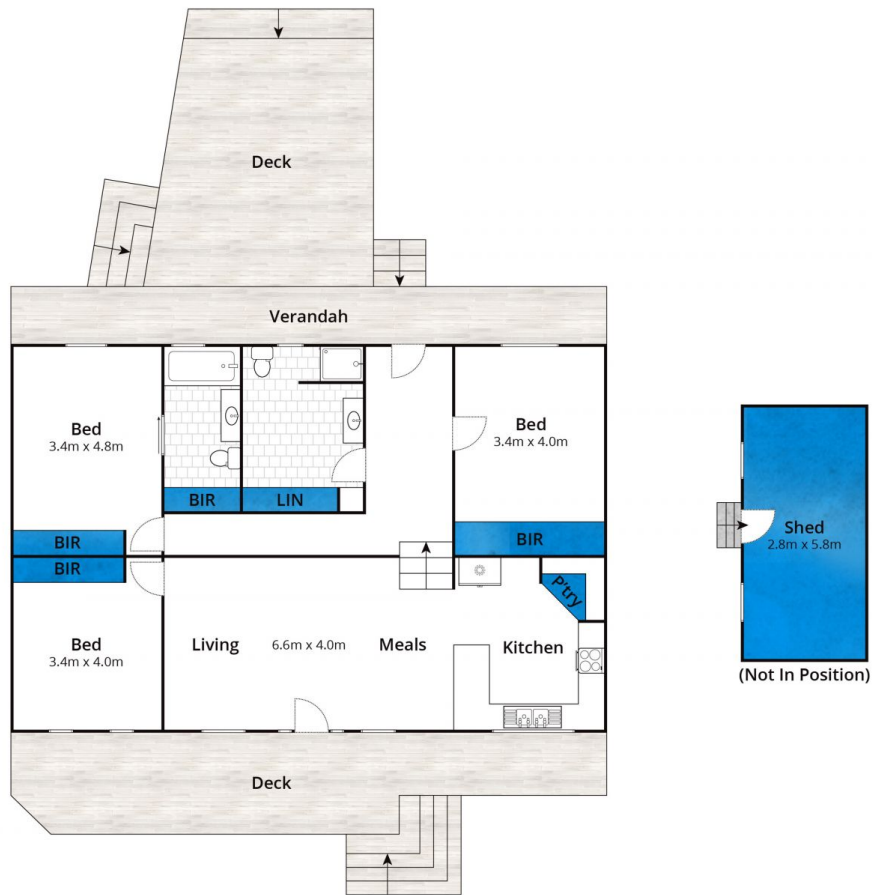


Michelle McDonald
0352631100

[For full version visit the website](https://www.greatoceanproperties.com.au)

<https://www.greatoceanproperties.com.au>

5220 0000



Approx House Area 122m²

Whilst bwrn.com.au has made every attempt to ensure the accuracy of the floor plan contained here, measurements are approximate and no responsibility is taken for any error, omission, or mis-statement. This plan is for illustrative purposes only.

2 McConnell Close, Anglesea

