



### 8 Timbara Cluster FAIRHAVEN VIC

3 2 2

Set on over half an acre (2219sqm app) and bordering a 9 acre native common ground, this classic beach house enjoys gorgeous views to Eastern View and Lorne, and epitomises everything that is great about easy coastal living. The very large light filled open plan living area, with substantial sun decks on either side allow you to follow the sun between morning and afternoon - and then settle back to enjoy stunning sunsets at night. Accommodation is in 3 double bedrooms serviced by 2 bathrooms, both of which are set up as ensuites. Polished timber floors reinforce the holiday feel, as does the wood heater to enjoy a wine in front of at night. There is ample space under the residence for extension for future needs if required and is currently used for car parking. Originally built by highly regarded local builder Steve Skilbeck, the property is

**Type** : House  
**Price** : \$2,250,000  
**Land Size** : 2219 sqm  
**View** : <https://www.greatoceanproperties.com.au/7743234>

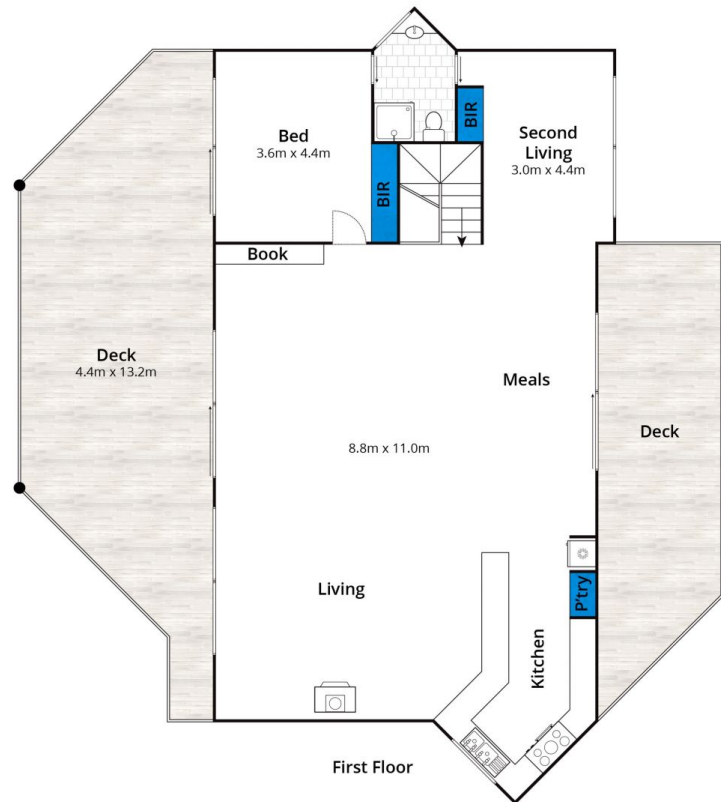
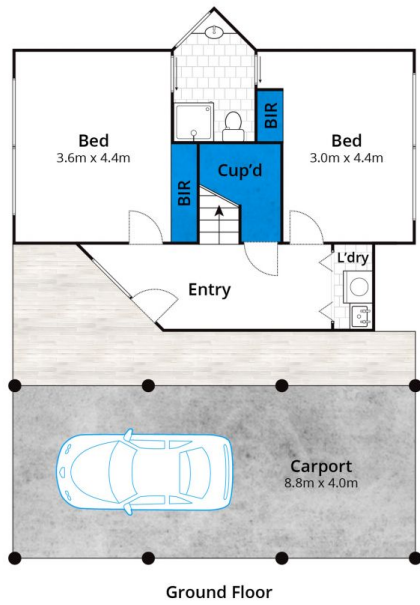


**Marty Maher**  
0352200000



**Mim Atkinson**  
0352200000

[For full version visit the website](https://www.greatoceanproperties.com.au)



Approx House Area 198m<sup>2</sup>

Whilst [bwrm.com.au](http://bwrm.com.au) has made every attempt to ensure the accuracy of the floor plan contained here, measurements are approximate and no responsibility is taken for any error, omission, or mis-statement. This plan is for illustrative purposes only.

## 8 Timabara Cluster, Fairhaven

