



37 Forest Drive FAIRHAVEN VIC

4 2 2

When both bush and beach life beckon it can be hard to choose. This property solves that dilemma by satisfying both desires and it offers even more. Positioned directly opposite the Great Otway National Park and close to Fairhaven Beach, this property features a split level home with beautiful north facing views. Offered over three levels with a flowing floor plan, upstairs is all about relaxed and spacious open plan living. Capitalising on the bushland outlook and the northerly aspect, it is sunny and bright with easy connection to outdoor living on a large north facing deck. You will embrace every opportunity to effortlessly entertain family and friends here. There are four good sized bedrooms plus a study. The master, on the ground floor, includes an en-suite and walk-in robe. The extensive 1,001sqm (approx) allotment is naturally landscaped with

Type : House

View : <https://www.greatoceanproperties.com.au/7744603>

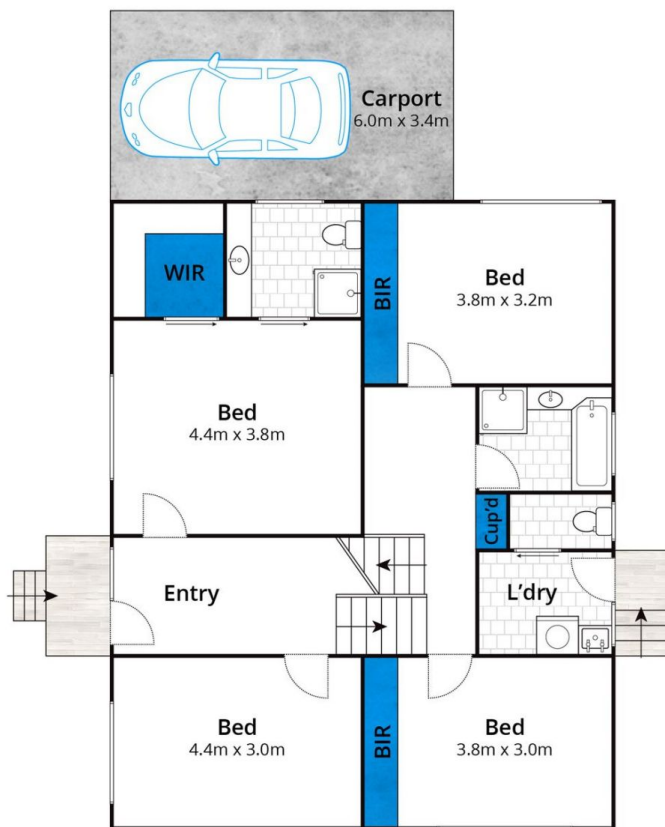


Mim Atkinson
0352200000

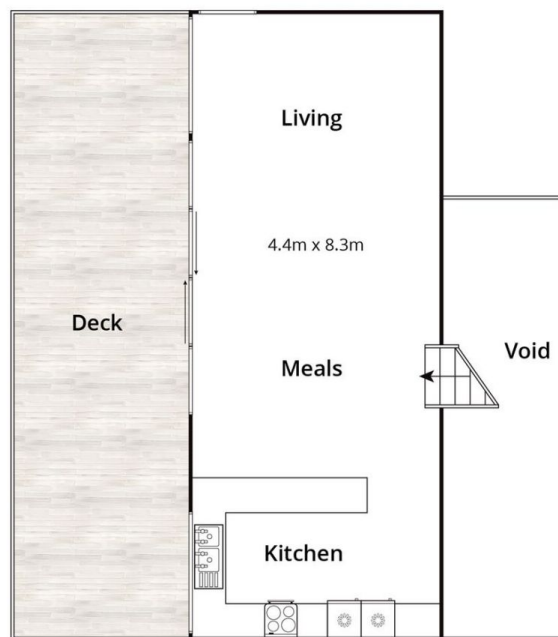


Marty Maher
0352200000

[For full version visit the website](https://www.greatoceanproperties.com.au)



Ground Floor



First Floor

Approx House Area 148m²

Whilst bwrm.com.au has made every attempt to ensure the accuracy of the floor plan contained here, measurements are approximate and no responsibility is taken for any error, omission, or mis-statement. This plan is for illustrative purposes only.

37 Forest Drive, Fairhaven

