



20 She Oak Crescent FAIRHAVEN VIC

3 1 2

Offering the ultimate in beachside living, 20 SHE OAK CRESCENT is a warm, light filled, energy efficient north facing home set in a beautiful native garden.

Whether it's swimming at the pristine Fairhaven beach, entertaining on the north facing deck, or luxuriating in a hot spa under a crystal clear starry night sky, this home, on a 1000sqm allotment, is a true haven to enjoy.

The open plan design includes large cathedral windows and a pitched ceiling which gives a welcome sense of space. They also fill the living and kitchen areas with warmth and abundant light while providing stunning views of the surrounding trees, birds and sky.

Double glass sliding doors off the living area offer easy access to the large sunny outdoor deck. The three double bedrooms look out to the native garden through large

Type : House
Price : \$1,345,000
Land Size : 1000 sqm
View : <https://www.greatoceanproperties.com.au/7749027>

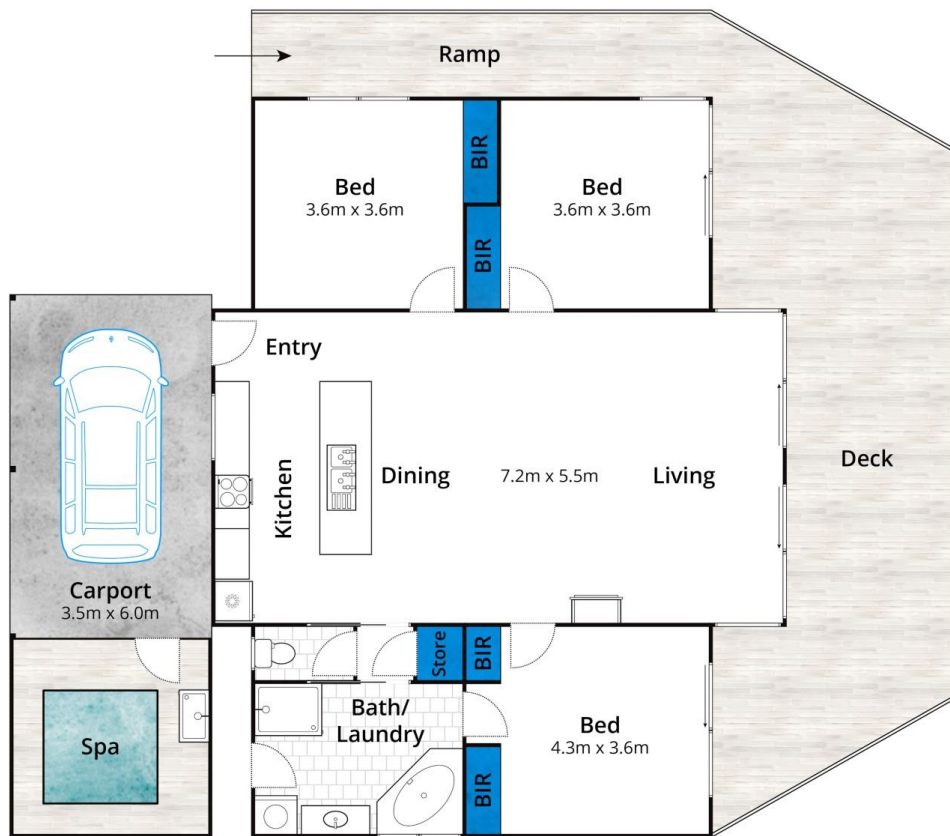


Marty Maher
0352200000



Mim Atkinson
0352200000

[For full version visit the website](https://www.greatoceanproperties.com.au)



Approx House Area 192m²

Whilst bwrn.com.au has made every attempt to ensure the accuracy of the floor plan contained here, measurements are approximate and no responsibility is taken for any error, omission, or mis-statement. This plan is for illustrative purposes only.

20 She Oak Crescent, Fairhaven

