



15 Painkalac Court AIREYS INLET VIC

3 1 2

The superb position of this property, set in the tightly held oceanside precinct, is matched by the presentation of this classic 3BR beach house. With the beautiful Inlet Beach and river only a 3 minute stroll via the public access across the road, you can put on your wet suit at home and walk to the surf, and with the shops and cafes nearby, you can just park the car and forget about it. The split level residence has been very well maintained and the style of the dwelling matches its beach setting perfectly. The upper level has a covered north facing sun deck, with built in heater, which looks over the very private, landscaped garden and is the perfect place to relax all year round. Features include open plan living, kitchen and dining, sun deck and balcony, wood heater, air-conditioning, double carport and a view of the Lighthouse. With the 573 sqm allotment being level, it is

Type : House
Price : \$ 1,425,000
Land Size : 573 sqm
View : <https://www.greatoceanproperties.com.au/7796197>

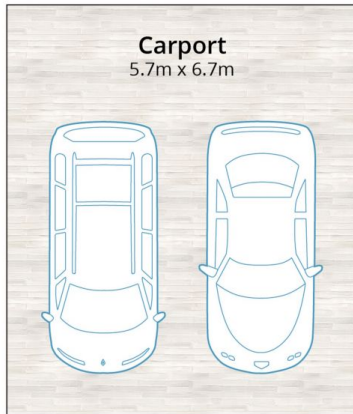


Mim Atkinson
0352200000

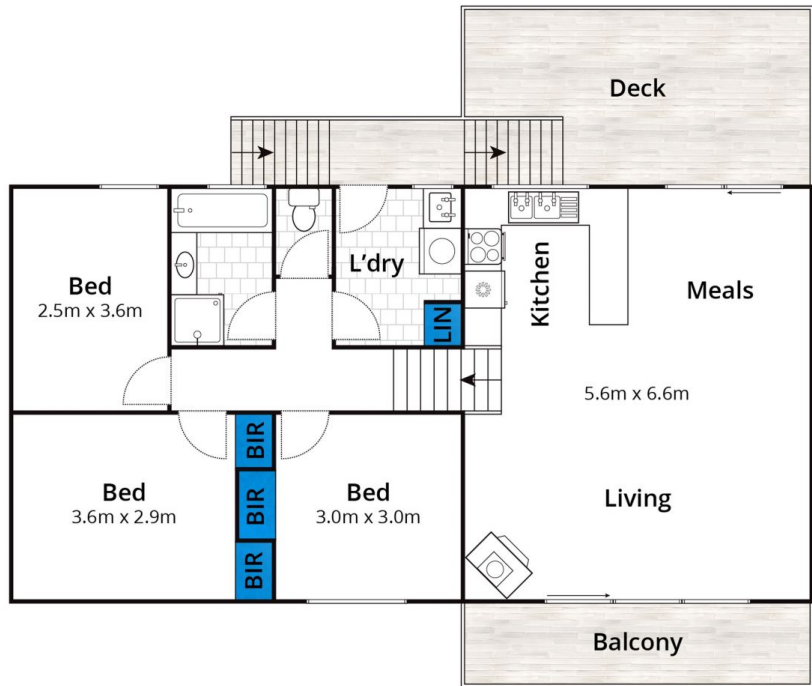


Marty Maher
0352200000

[For full version visit the website](https://www.greatoceanproperties.com.au)



Lower Level



Upper Level

Whilst bwrm.com.au has made every attempt to ensure the accuracy of the floor plan contained here, measurements are approximate and no responsibility is taken for any error, omission, or mis-statement. This plan is for illustrative purposes only.

15 Painkalac Court, Aireys Inlet

