



46 Belton Street ANGLESEA VIC

4 3 2

This substantial classic Anglesea beach house is set in an elevated position with beautiful north facing hinterland views. Set on a very large 1315sqm (approx) allotment the property has been much loved for many years by the current owners. Like any classic beach house there is ample accommodation in 4 bedrooms serviced by 3 bathrooms with two of the bedrooms having ensuites. The large open plan living area opens onto a substantial north facing sundeck that captures a gorgeous outlook over the Anglesea hinterland. There is a second living area downstairs that is perfect for teenagers or guests. The large allotment is landscaped behind the house to provide a usable low maintenance outdoor space that can be catered to direct from the kitchen. A great package if you are looking for a coastal property with character that is

Type : House
Land Size : 1315 sqm
View : <https://www.greatoceanproperties.com.au/906427>

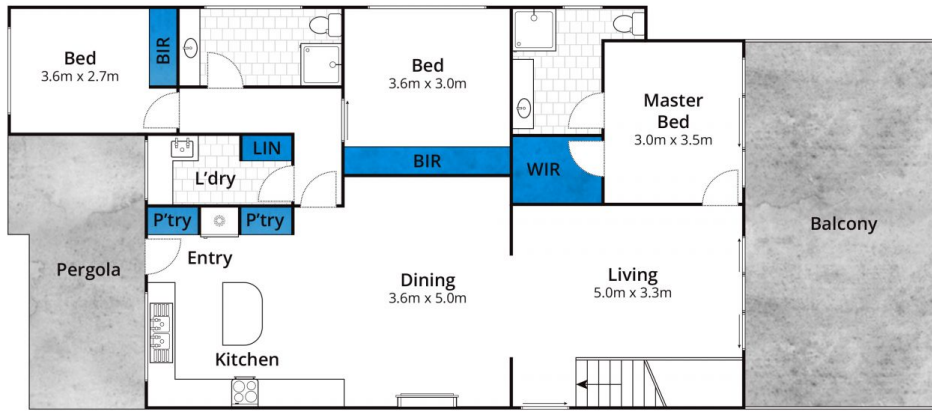


Marty Maher
0352200000

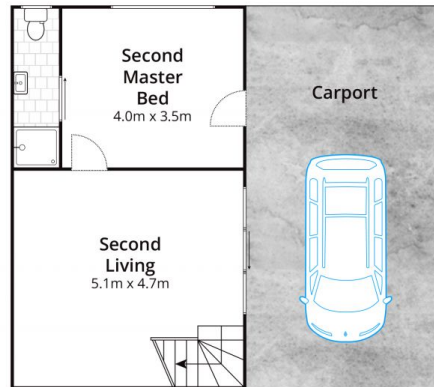


Michelle McDonald
0352631100

[For full version visit the website](https://www.greatoceanproperties.com.au)



Top Floor



Ground Floor

Whilst bwrn.com.au has made every attempt to ensure the accuracy of the floor plan contained here, measurements are approximate and no responsibility is taken for any error, omission, or mis-statement. This plan is for illustrative purposes only.

46 Belton Street, Anglesea

