



## 8 Lialeeta Road FAIRHAVEN VIC

4 3 2

The expansive, stunning outlook from this brilliant position has so many beautiful elements that you need to see it in person to do it justice. Overlooking the beautiful river towards the historic Split Point Lighthouse at Aireys Inlet on the left side of the view and along the breaking surf to the right is an enchanting combination. With access to the beach close by, this quintessential coastal residence suits its setting perfectly. Facing east to capture all the morning sun, the 4 bedroom property is set on 1041sqm (app) and enjoys street level access to cater for all ages. The light filled large open plan living area on the upper level is a gorgeous space that is easy to visualise large family gatherings in, spilling out onto the sundecks which wrap around on 3 sides. There is a large studio space on the lower level that could be utilised to suit many needs. The

**Type** : House  
**Price** : \$ 2,300,000  
**Land Size** : 1041 sqm  
**View** : <https://www.greatoceanproperties.com.au/7964498>



**Marty Maher**  
0352200000

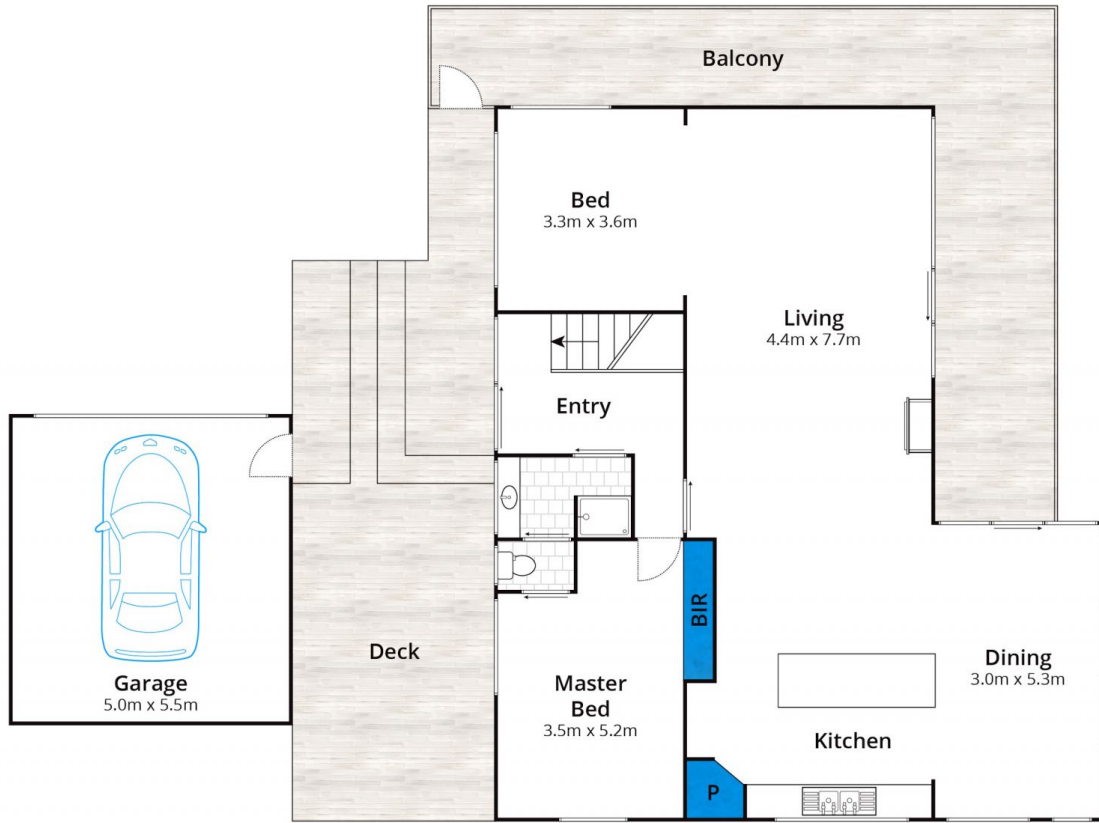


**Mim Atkinson**  
0352200000

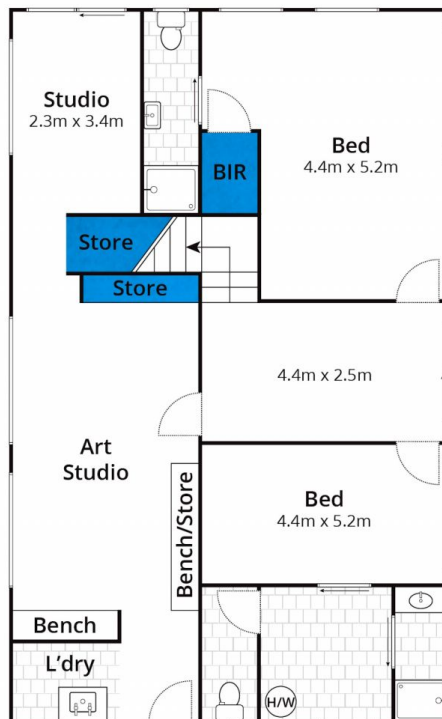
[For full version visit the website](https://www.greatoceanproperties.com.au)

<https://www.greatoceanproperties.com.au>

5220 0000



Ground Floor



Lower Ground Floor