



11 Paringa Crescent ANGLESEA VIC

3 1 2

This well presented single level 3 bedroom home is located in the heart of Anglesea yet tucked away in a quiet no through road. On a generous allotment with the north facing rear garden adjoining the beautiful Kuarka Dorla reserve. The open plan layout in a natural coastal palette to match the picturesque setting opens through to a spacious undercover rear deck area creating a relaxing sanctuary. The galley style kitchen is very functional and reverse cycle split system heating and cooling provides year round comfort. Comprising of a central bathroom with separate toilet, carpeted bedrooms, each with built in robe. The single level is suitable for all age groups but particularly suitable for those planning for later in life. Stroll to the river, Anglesea town centre, bowls club and one of the best beaches and surf clubs on the coast. A sought

Type : House
Price : \$1,025,000
Land Size : 603 sqm
View : <https://www.greatoceanproperties.com.au/7988835>

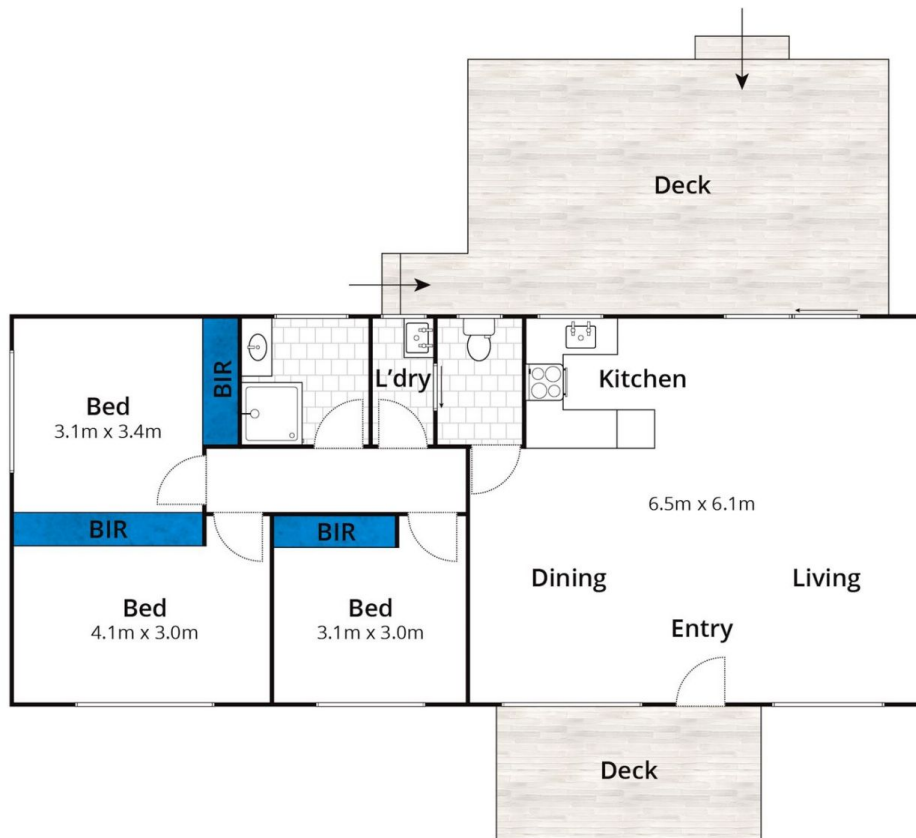


Michelle McDonald
0352631100



Marty Maher
0352200000

[For full version visit the website](https://www.greatoceanproperties.com.au)



Whilst bwrm.com.au has made every attempt to ensure the accuracy of the floor plan contained here, measurements are approximate and no responsibility is taken for any error, omission, or mis-statement. This plan is for illustrative purposes only.

11 Paringa Crescent, Anglesea

