



47 Wybellenna Drive FAIRHAVEN VIC

5 2 1

Taking full advantage of its elevated position, this superbly presented 5 bedroom residence enjoys gorgeous ocean, lighthouse and river valley views. Facing east, the residence captures all the morning sun while the rear sundeck area provides a beautiful sun trap for the afternoons. When you add the front and rear deck areas to the large open plan on the upper level, it becomes a huge space for all year round entertaining with the stunning view as the backdrop. There is a second living area on the lower level that is ideal for family members to have their space. The 5 bedrooms are serviced by two bathrooms and 3 toilets. The rear bedroom on the upper level could also be used as a parents retreat or home office if a 5th bedroom is not needed. The residence is set on a substantial 836sqm (app) allotment and all the trees that

Type : House
Price : \$ 2,100,000
Land Size : 836 sqm
View : <https://www.greatoceanproperties.com.au/8009055>

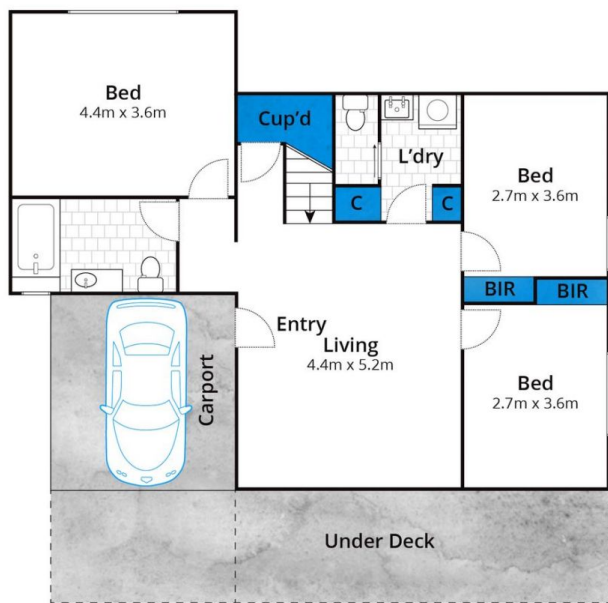


Marty Maher
0352200000



Mim Atkinson
0352200000

[For full version visit the website](https://www.greatoceanproperties.com.au)



Ground Floor



First Floor

Approx. House Area 182m²

Whilst bwrm.com.au has made every attempt to ensure the accuracy of the floor plan contained here, measurements are approximate and no responsibility is taken for any error, omission, or mis-statement. This plan is for illustrative purposes only.

47 Wybellenna Drive, Fairhaven

