



35 Kalbaru Drive FAIRHAVEN VIC

3 2 1

This simply beautiful residence takes full advantage of its spectacular corner position providing stunning views, a sunny aspect and a good sense of escapism. Breathtaking ocean, inlet and lighthouse views are on display from the open plan living area and kitchen. This space is an absolute highlight with soaring ceilings, timber floors and picture windows. More stunning views greet you from the master suite and from one of the two additional bedrooms. The residence wraps around a central courtyard deck that acts a second summer living and BBQ entertaining area. With its sunny northern aspect and sheltered from the sea breezes, it is very easy to visualise long lunches with family and friends here. Alternatively, there is a second elevated front sun deck that is ideal for a late afternoon wine to watch the sunset. In winter curl up in front of the woodfire

Type : House
Land Size : 408 sqm
View : <https://www.greatoceanproperties.com.au/8040178>



Marty Maher
0352200000

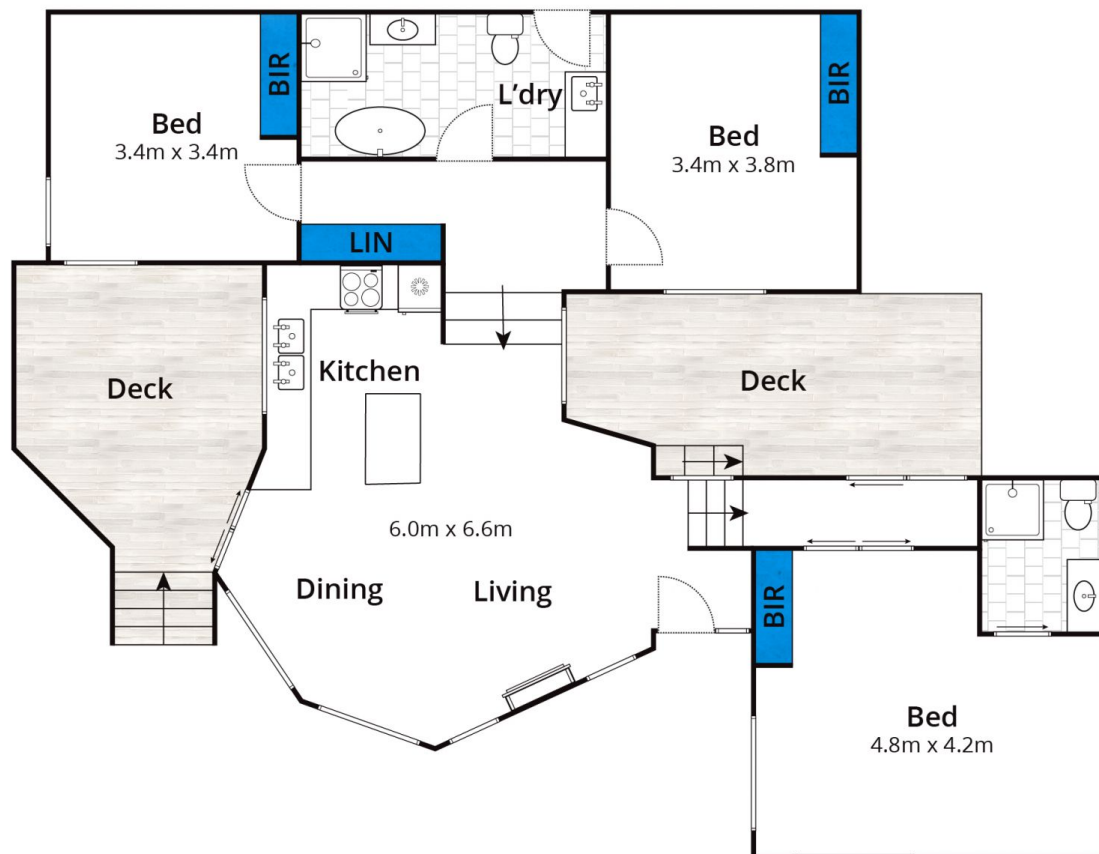


Mim Atkinson
0352200000

[For full version visit the website](https://www.greatoceanproperties.com.au)

<https://www.greatoceanproperties.com.au>

5220 0000



Whilst bwrm.com.au has made every attempt to ensure the accuracy of the floor plan contained here, measurements are approximate and no responsibility is taken for any error, omission, or mis-statement. This plan is for illustrative purposes only.

35 Kalbaru Drive, Fairhaven

