



15 Paringa Crescent ANGLESEA VIC

4 2 2

This well presented single-level residence is nestled in the heart of Anglesea, perfectly positioned with the Kuarka Dorla nature reserve as your neighbour, which provides direct walking access to the Anglesea River and main shopping centre. This contemporary home offers four bedrooms, designed with comfort and functionality in mind. The main bedroom opens onto the rear garden area and features an ensuite, providing a lovely private retreat. An additional bathroom ensures convenience for family and guests. North-facing at the rear, the home is bathed in natural sunlight throughout the day, enhancing the open-plan living spaces. The large rear sundeck is perfect for entertaining or simply soaking up the sun, while the expansive backyard provides ample space for outdoor activities and relaxation. Single-level living makes this

Type : House
Price : \$ 1,100,000
Land Size : 632 sqm
View : <https://www.greatoceanproperties.com.au/8082372>

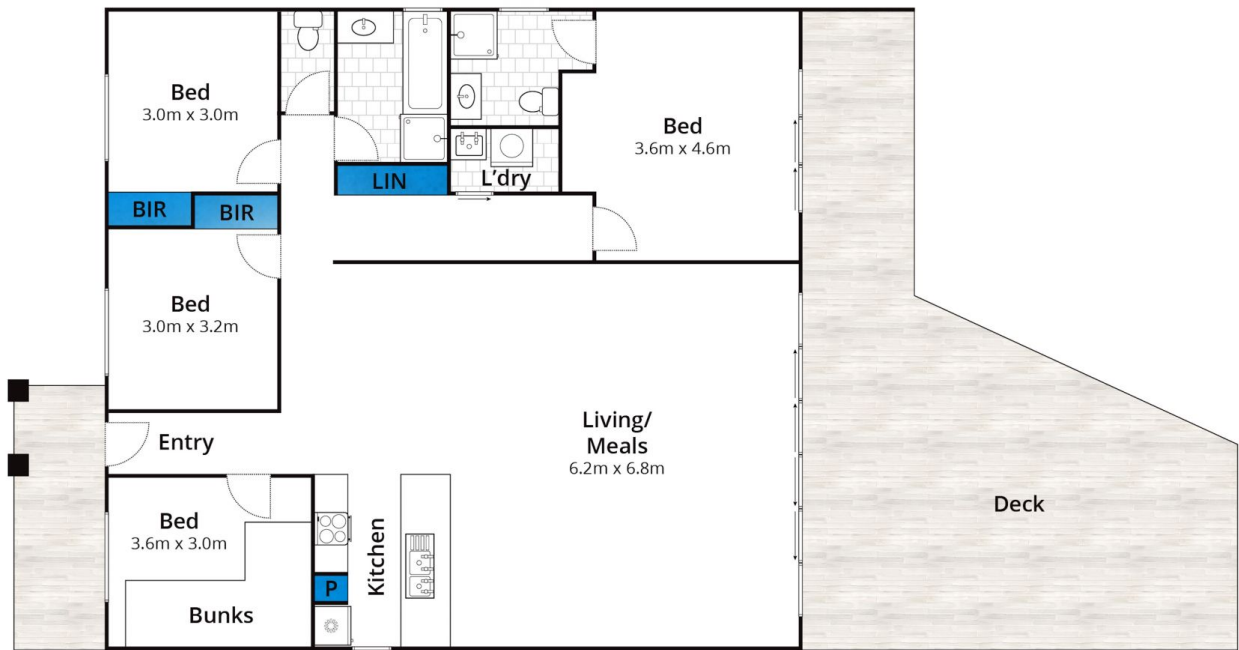


Michelle McDonald
0352631100



Marty Maher
0352200000

[For full version visit the website](https://www.greatoceanproperties.com.au)



Approx House Area 140m²

Whilst bwrm.com.au has made every attempt to ensure the accuracy of the floor plan contained here, measurements are approximate and no responsibility is taken for any error, omission, or mis-statement. This plan is for illustrative purposes only.

15 Paringa Crescent, Anglesea

