






17 Smithers Street LORNE VIC

3  2  2 

Offers required by November 29 2024

The ability to capture natural light is the cornerstone of this appealing design where beautiful 180-degree views stretch from Split Point Lighthouse to Lorne Pier, offering a stunning backdrop for everyday living. The view is so wide it is very difficult to do it justice with photos and you will be very pleasantly surprised upon inspection. This 3 bedroom home is designed with both comfort and functionality in mind. The dual living zones create the perfect balance?downstairs for the kids, upstairs for the adults?while the woodfire adds warmth and coziness during winter months. Whether you're enjoying a meal on the private rear balcony, cooking with a view, or relaxing on the front balcony with a book and a glass of wine, every

Type : House
Price : \$1,700,000 - \$1,775,000
Land Size : 698 sqm
View : <https://www.greatoceanproperties.com.au/8168449>



Marty Maher
0352200000

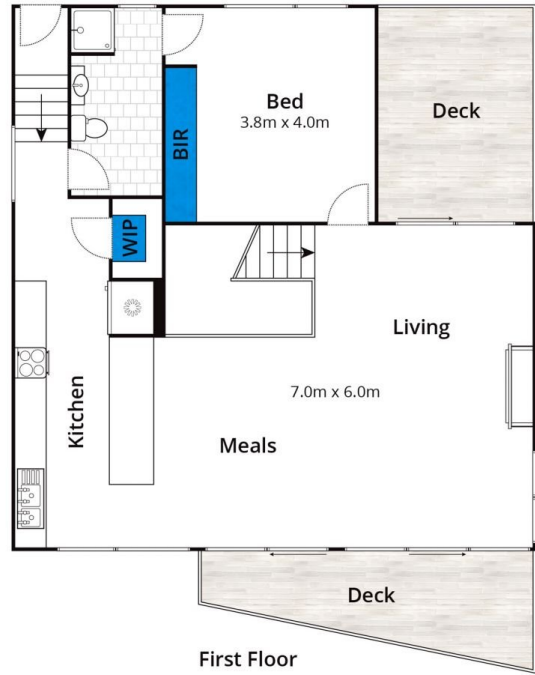
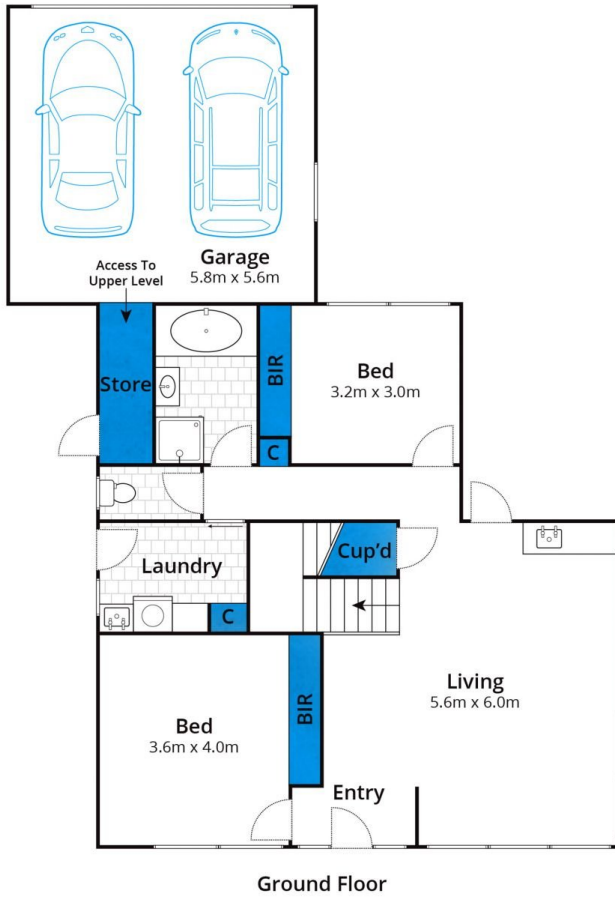


Mim Atkinson
0352200000

[For full version visit the website](https://www.greatoceanproperties.com.au)

<https://www.greatoceanproperties.com.au>

5220 0000



Approx House Area 213m²

Whilst bwrn.com.au has made every attempt to ensure the accuracy of the floor plan contained here, measurements are approximate and no responsibility is taken for any error, omission, or mis-statement. This plan is for illustrative purposes only.

17 Smithers Street, Lorne

