

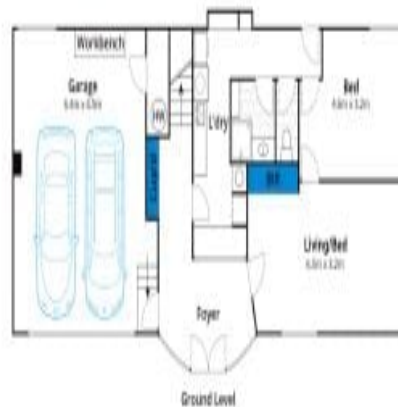
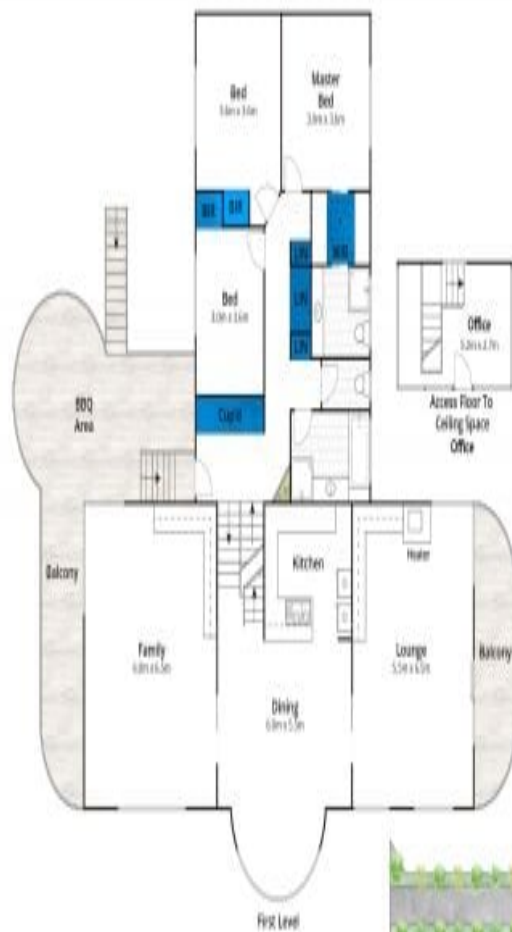


**3A Lighthouse Road
Aireys Inlet, VIC**

5 BED **3** BATH **2** CAR 

Substantial holding in the heart of the lighthouse precinct.
 Set on over an acre of land (4293sqm app) across 2 titles, this substantial holding is available for the first time in over 40 years. With a grand 4BR residence and tennis court situated on one title and a separate adjoining vacant allotment on the other, the property provides a lot of future options for those looking for a large family compound on the coast. Situated in the sought after lighthouse precinct of Aireys Inlet the property is walking distance to absolutely all your needs including beaches, cafes and shops. Built in 1995, the residence design allows it to cater for large family groups which is exactly what it has been used for to date. The 4 level residence offers 3 living areas, accommodation in 4 bedrooms serviced by three bathrooms. The third living area often doubles as a 5th bedroom. There is a home office on the uppermost level that enjoys some ocean views towards Eastern View and a lock up double garage on the ground level. The residence enjoys ducted heating and cooling

\$4,200,000 - \$4,400,000
Contact: Marty Maher
 0419505279
 Mim Atkinson
 0408912533
Type: House
Land: 4293m2
<https://www.greatoceanproperties.com.au>



Approx House Area 341m²

Approx Land Area 4293m²

While www.com.au has made every attempt to ensure the accuracy of the floor plan contained here, measurements are approximate and no responsibility is taken for any error, omission, or mis-statement. This plan is for illustrative purposes only.

3 Lighthouse Road, Aireys



Plans shown are only indicative of layout. Dimensions are approximate.

Aireys Inlet, VIC
3A Lighthouse Road