



48 Wybellenna Drive
Fairhaven, VIC

3
BED

2
BATH

2
CAR

greateoceanproperties

This is the life!

Offers required by 15 November 2024

This beautifully presented three-bedroom residence is not just a house; it's a lifestyle waiting for you to embrace. With stunning views that take in the ocean, river, majestic sandstone cliffs, and the iconic Split Point Lighthouse in Aireys Inlet, every moment spent here feels like a retreat. The double storey, rendered brick design features open-plan living areas on both levels, ensuring space and light flow throughout the home. This layout is ideal for family gatherings or quiet evenings in, adapting seamlessly to your lifestyle. With just one owner since its construction, this residence has been lovingly cared for, offering you peace of mind as you step into your new home. Multiple sundecks, at the front and rear, allow you to soak up the sun at different times of the day, whether you're sipping your morning coffee or enjoying a sunset dinner. Situated on a landscaped 1000sqm (approx.) allotment, you have direct access to the river below and allows a short stroll across the bridge leading you to local

cafes, perfect for your morning coffee fix

\$2,300,000 - \$2,400,000

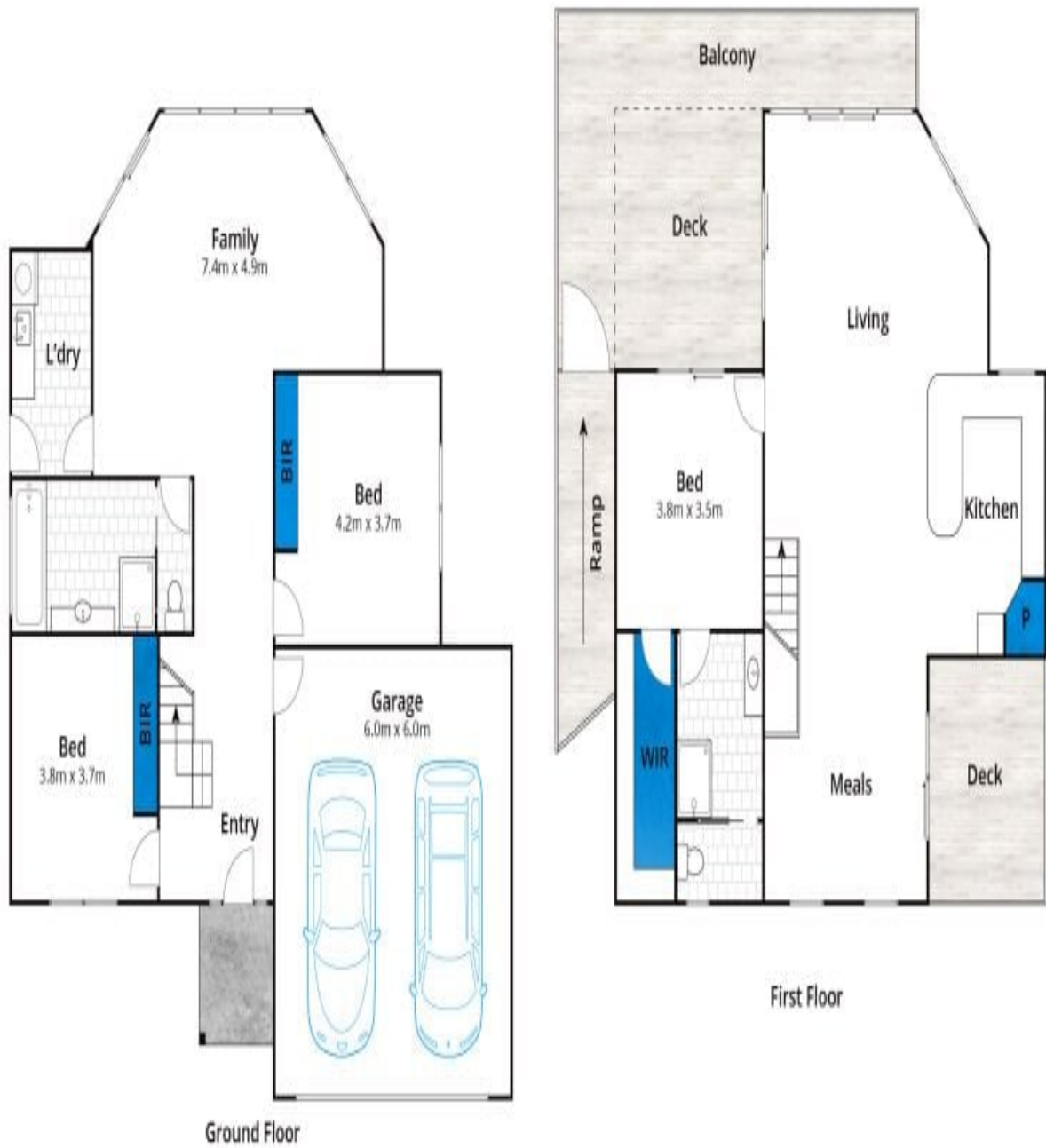
View: Sat, 19 Oct 2024 @ 1:00 pm - 1:30 pm

Contact: Marty Maher
0419505279
Mim Atkinson
0408912533

Type: House

Land: 1000m2

<https://www.greatoceanproperties.com.au>



Approx. Area 234m²

Whilst barrm.com.au has made every attempt to ensure the accuracy of the floor plan contained here, measurements are approximate and no responsibility is taken for any error, omission, or mis-statement. This plan is for illustrative purposes only.

48 Wybellenna Drive, Fairhaven

Plans shown are only indicative of layout. Dimensions are approximate.



Fairhaven, VIC
48 Wybellenna Drive