



13 O'Donohue Road  
Anglesea, VIC

**3**  
BED

**1**  
BATH

**2**  
CAR

greatoceanproperties

### Charming coastal retreat

Discover the perfect blend of modern comfort and natural beauty in this gorgeous single-storey weatherboard cottage style residence. The open plan living area with its soaring pitched ceiling and exposed timber trusses allows the home to radiate warmth and character, creating an inviting atmosphere for family coastal living. This is the type of property that many believe a coastal retreat should feel like, charming and welcoming. Accommodation is in 3 bedrooms plus a unique loft for overflow accommodation or a hang out space for children. Step outside to a large sundeck that doubles as a second living area that is ideal for outdoor entertaining or even just a coffee in the morning with the newspaper. Set on a native 540sqm (app) allotment, there is little maintenance and plenty of room to park and play. Walk down to O'Donohue Beach for your morning walk or stroll through the nearby Great Otway National Park, this home offers a genuine coastal lifestyle.

**\$1,250,000**

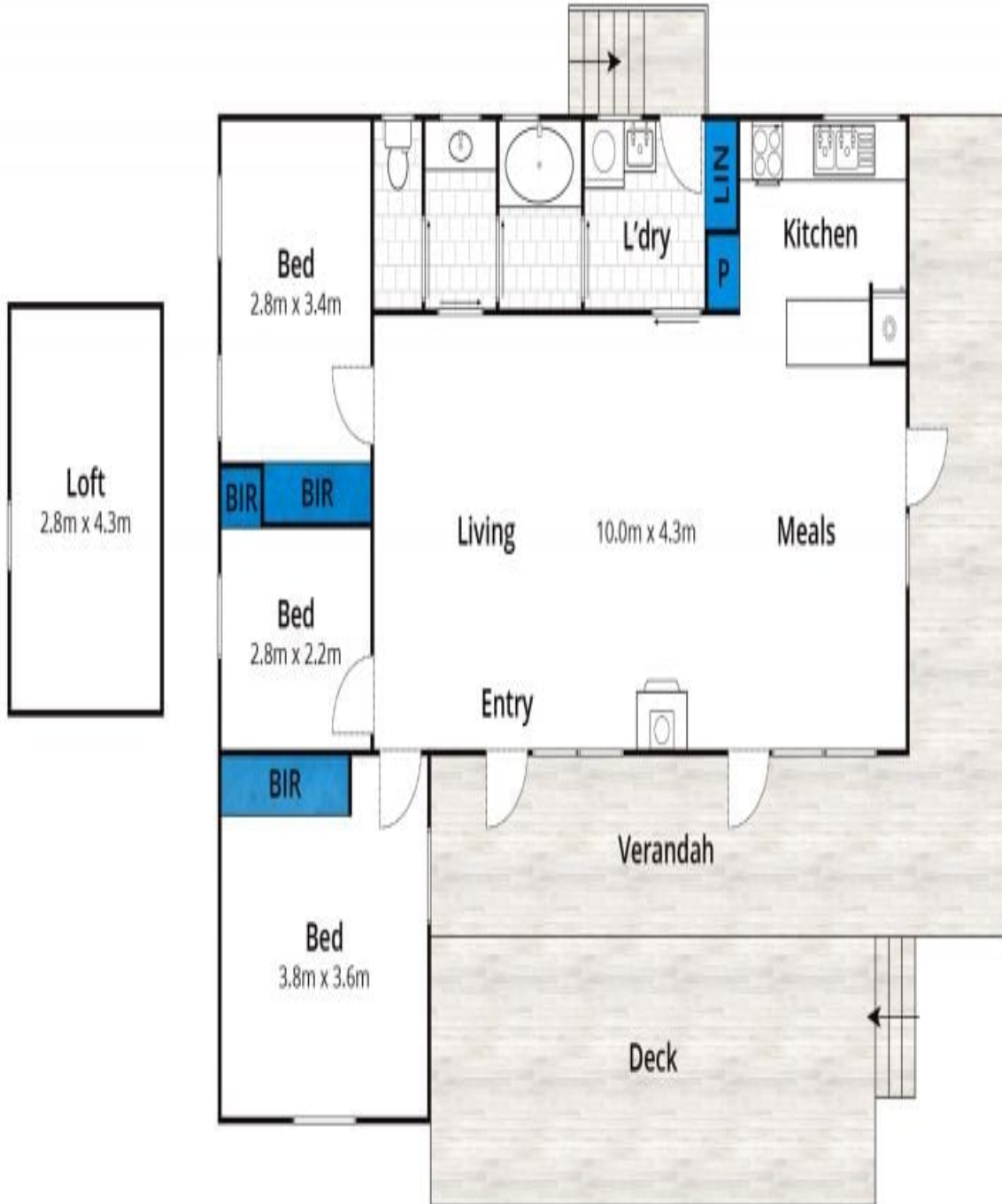
**View:** Sat, 19 Oct 2024 @ 1:00 pm - 1:30 pm

**Contact:** Marty Maher  
0419505279  
Michelle McDonald  
0418123927

**Type:** House

**Land:** 540m2

<https://www.greatoceanproperties.com.au>



Approx House Area 96m<sup>2</sup>

Whilst [barrm.com.au](http://barrm.com.au) has made every attempt to ensure the accuracy of the floor plan contained here, measurements are approximate and no responsibility is taken for any error, omission, or mis-statement. This plan is for illustrative purposes only.

## 13 Odonohue Road, Anglesea



Plans shown are only indicative of layout. Dimensions are approximate.

**Anglesea, VIC**  
13 O'Donohue Road